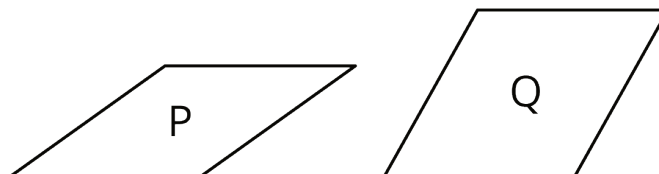
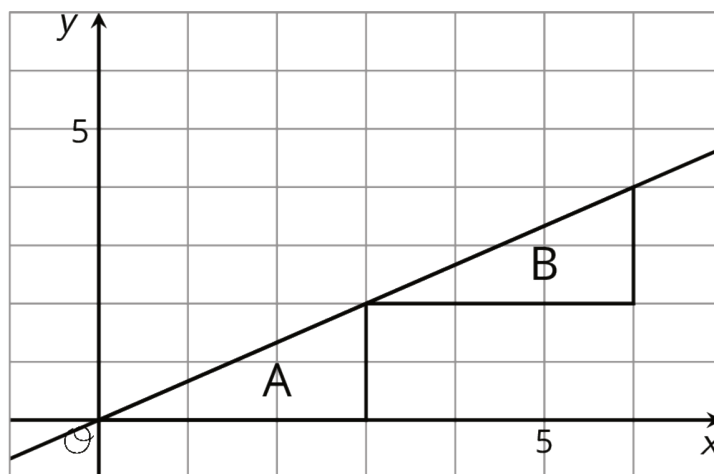


## Lesson 7 Practice Problems

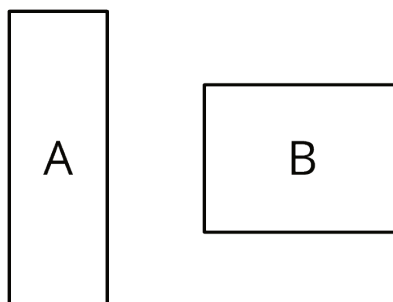
1. Is there a rigid transformation taking Rhombus P to Rhombus Q? Explain how you know.



2. Describe a rigid transformation that takes Triangle A to Triangle B.

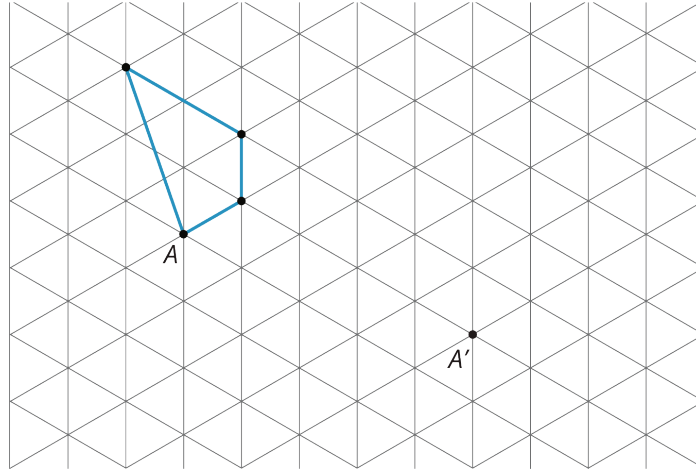


3. Is there a rigid transformation taking Rectangle A to Rectangle B? Explain how you know.

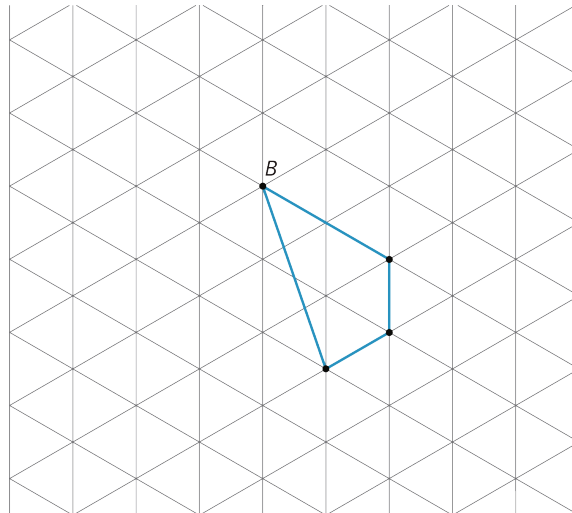


4. For each shape, draw its image after performing the transformation. If you get stuck, consider using tracing paper.

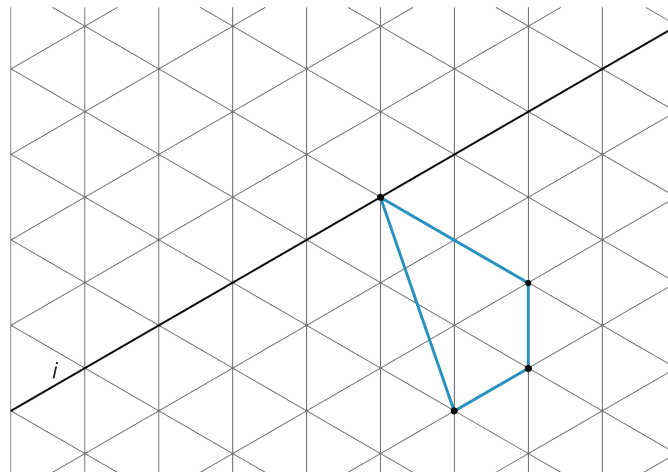
- a. Translate the shape so that  $A$  goes to  $A'$ .



- a. Rotate the shape 180 degrees counterclockwise around  $B$ .



- a. Reflect the shape over the line shown.



(From Unit 1, Lesson 4.)