

Grade 3 Unit 1

Lesson 2

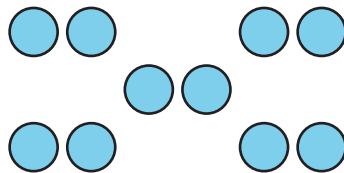
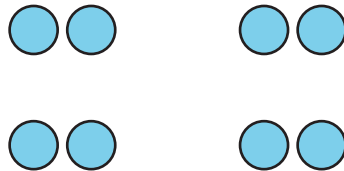
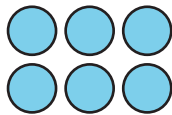
CC BY 2021 Illustrative Mathematics®

Unit 1 Lesson 2: Represent Data and Solve Problems

WU How Many Do You See: Dots in Groups (Warm up)

Student Task Statement

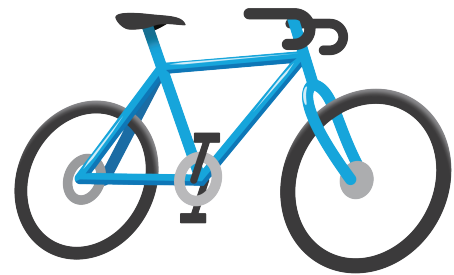
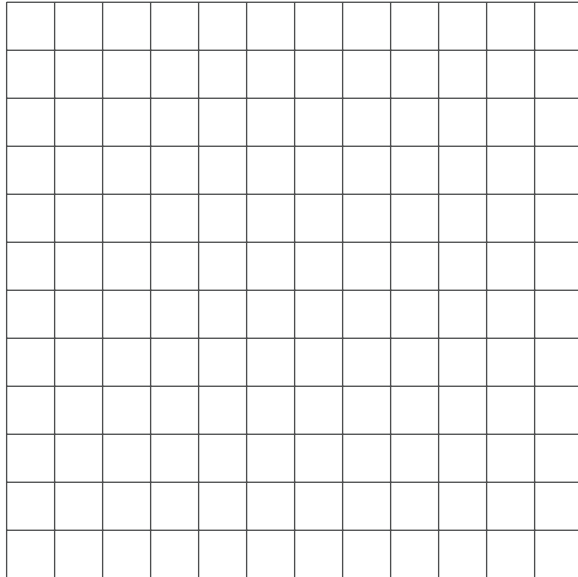
How many do you see? How do you see them?



1 How We Get Home

Student Task Statement

1. Follow your teacher's instructions to organize and represent the class data in a picture graph.
2. Represent the same data that shows how our class gets home on a bar graph.



2 Questions About a Bar Graph

Student Task Statement

1. Decide if each statement is true or false about how our class gets home. Explain your reasoning to your partner.
 - a. More students walk than go home any other way.
 - b. More students ride home on a bus than in a car.
 - c. Fewer students walk home than ride their bikes.
 - d. More students walk or ride their bikes than ride in a van.
2. Fill in the blanks as directed by your teacher, then answer each question.

a. "How many more students _____ than _____?"

b. "How many more students _____ or
_____ than _____?"