

Grade 2 Unit 7

Lesson 8

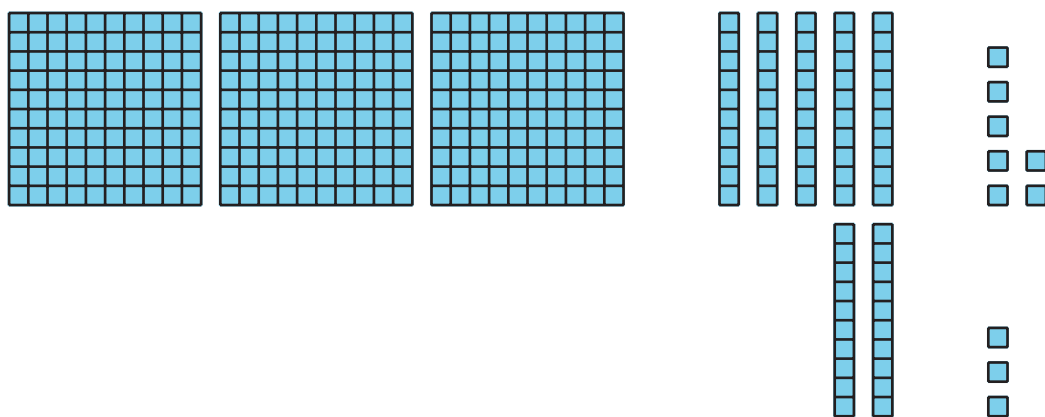
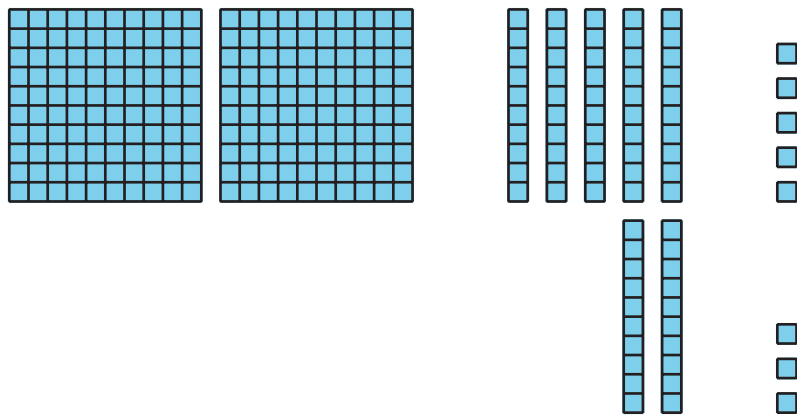
CC BY 2021 Illustrative Mathematics®

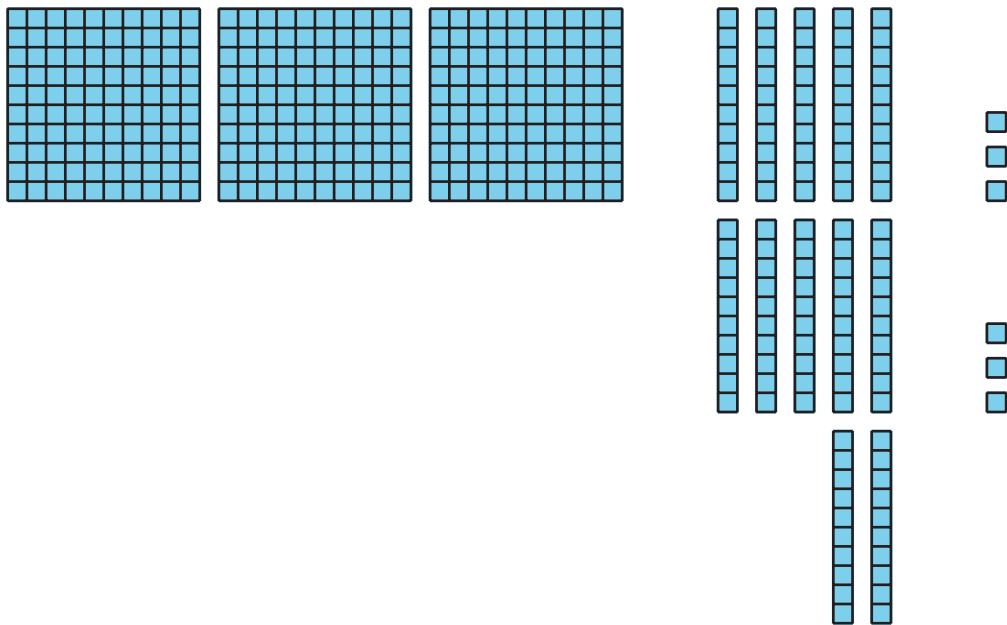
Unit 7 Lesson 8: Compose Tens and Hundreds to Add

WU How Many Do You See: Too Many Tens (Warm up)

Student Task Statement

How many do you see? How do you see them?



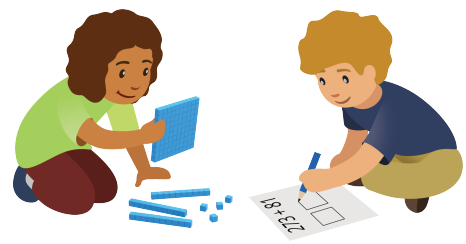


1 Compare the Sums

Student Task Statement

Find the value of each sum. Show your thinking. Use base-ten blocks if it helps.

1. $273 + 18$
2. $273 + 81$
3. $273 + 88$
4. What was the same and different about the sums?

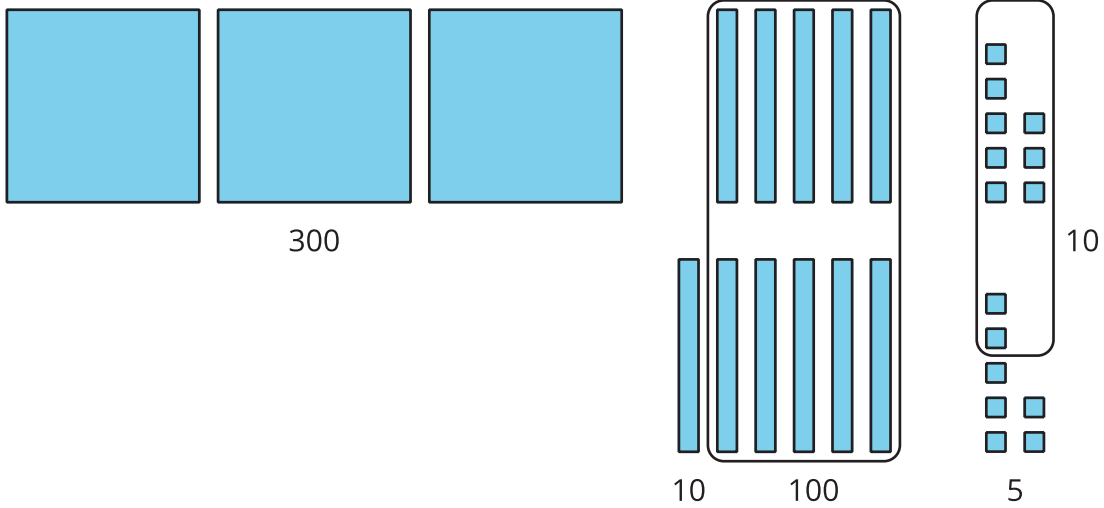


2 Different Ways to Show Your Thinking

Student Task Statement

1. Priya and Lin were asked to find the value of $358 + 67$.

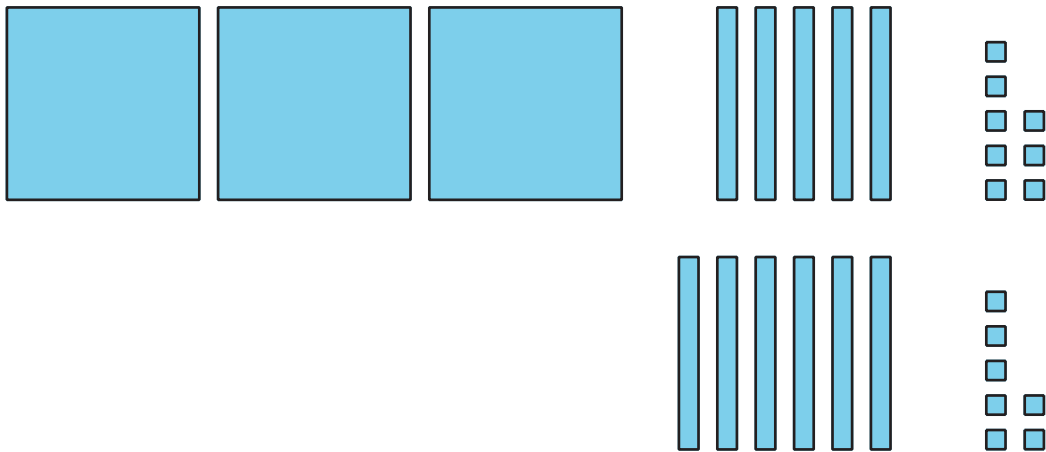
Priya's work



$$300 + 100 + 10 + 10 + 5$$

$$400 + 20 + 5 = 425$$

Lin's work



$$3 \text{ hundreds} + 11 \text{ tens} + 15 \text{ ones}$$

$$11 \text{ tens} = 110$$

$$15 \text{ ones} = 15$$

$$300 + 110 + 15 = 425$$

What do you notice about their work? What is the same and different about their representations? Be prepared to explain your thinking.

2. Find the value of $546 + 86$.

Show your thinking. Use base-ten blocks if it helps.