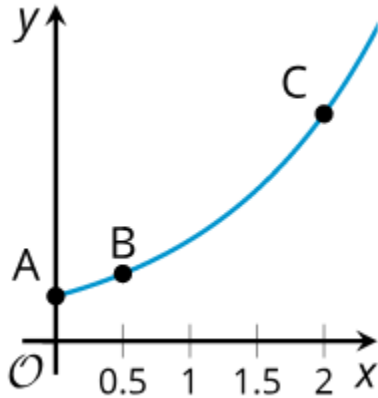


Info Gap: Two Points

## Problem Card 1

Here is a graph of an exponential function  $f$ .

Find an equation defining  $f$ .

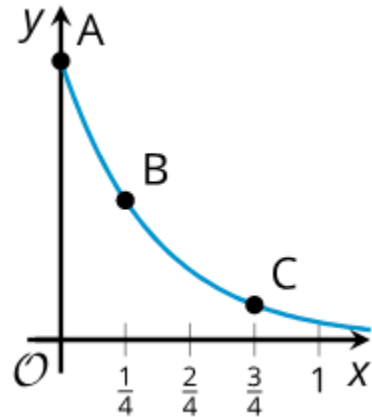


Info Gap: Two points

## Problem Card 2

Here is a graph of an exponential function  $g$ .

Find an equation defining  $g$ .



Info Gap: Two Points

## Data Card 1

- The  $y$ -intercept is 200.
- The  $y$ -coordinate of  $B$  is 300.
- The  $y$ -coordinate of  $C$  is 1,012.5.
- The rate of increase from 0 to 1.5 is 337.5%.

Info Gap: Two Points

## Data Card 2

- The  $y$ -intercept is 100.
- The  $y$ -coordinate of  $B$  is 50.
- The  $y$ -coordinate of  $C$  is 12.5.
- The rate of decrease from 0 to 0.5 is 75%.