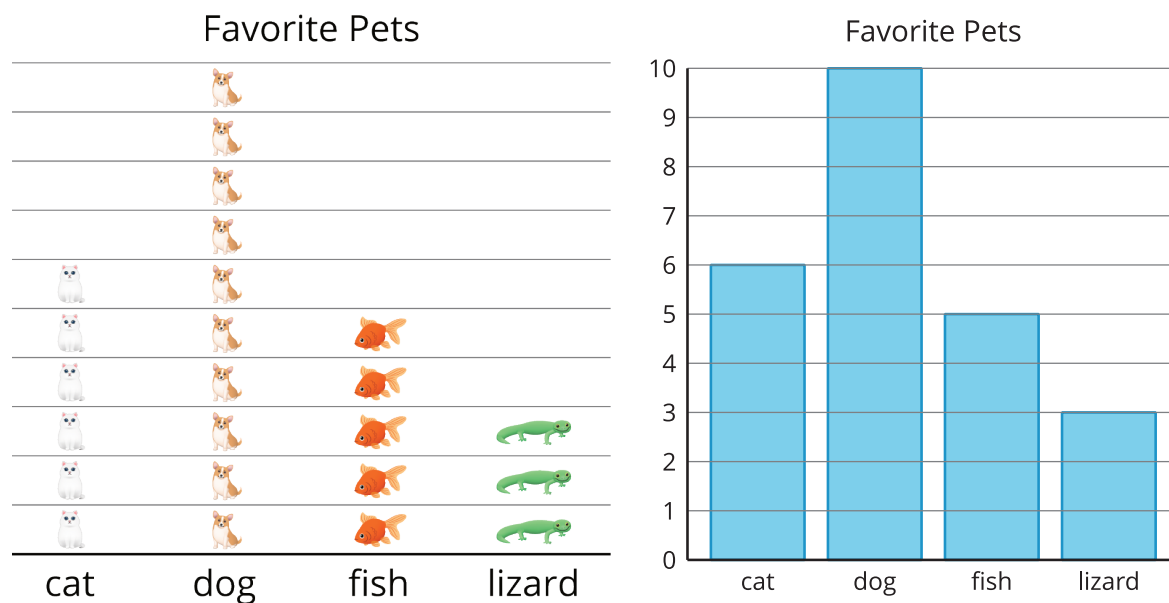


Lesson 9: Interpret Bar Graphs

- Let's interpret data in bar graphs.

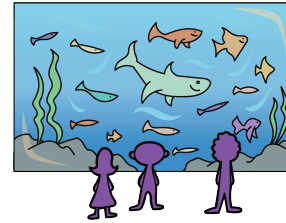
Warm-up: Notice and Wonder: Favorite Pets

What do you notice? What do you wonder?

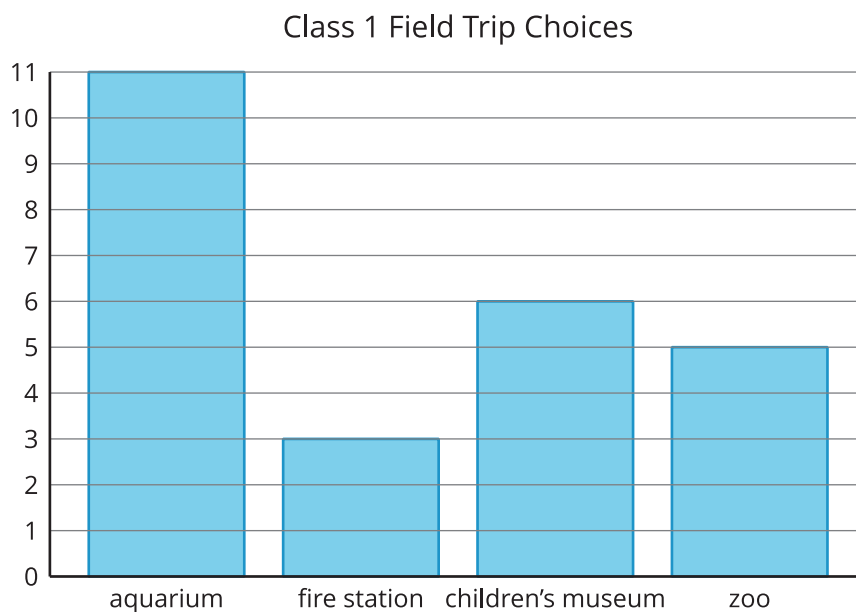


9.1: Field Trip Choices

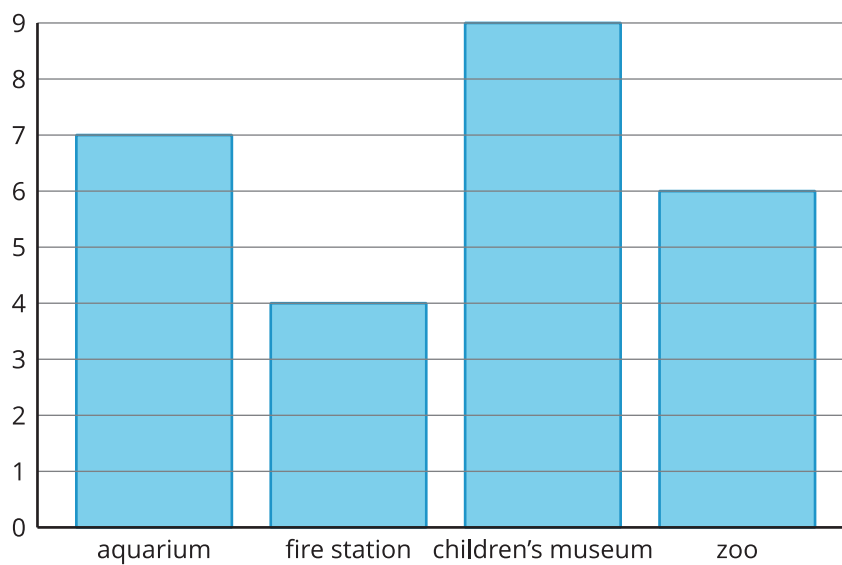
Groups of students in different classes were asked, “Where would you like to go for our field trip?” Their responses are shown in the bar graphs below.



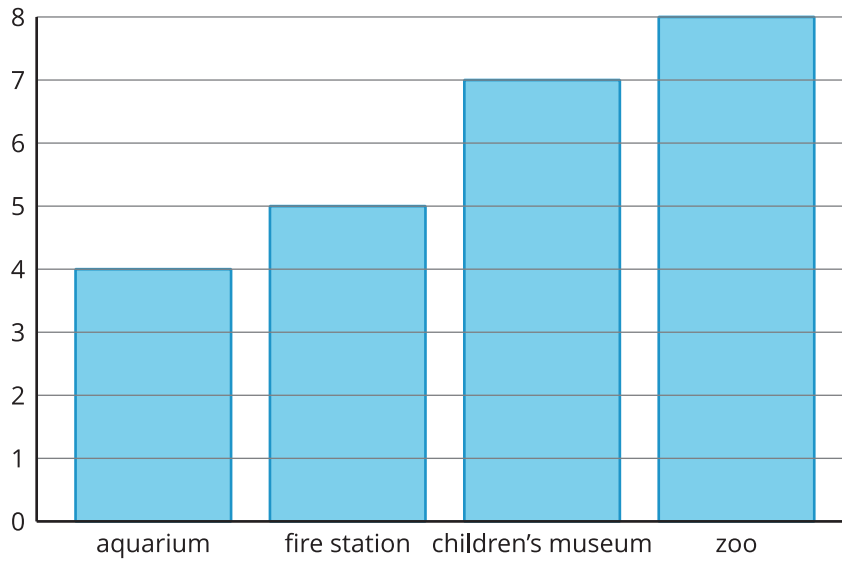
Write as many statements as you can to show what can be learned about the students’ field trip choices from the bar graph.



Class 2 Field Trip Choices

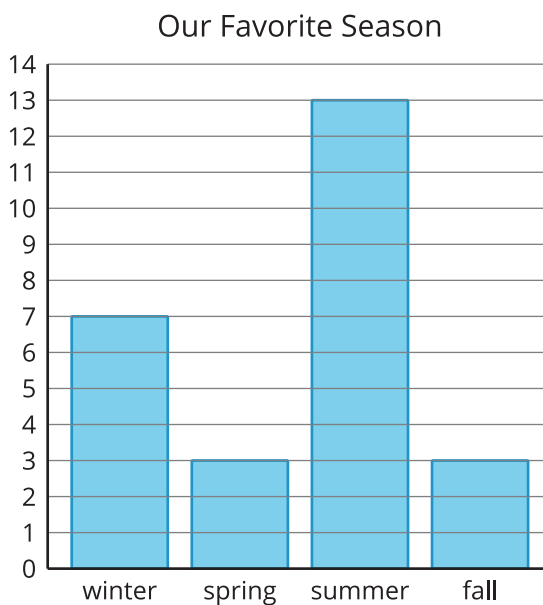


Class 3 Field Trip Choices



9.2: Our Favorite Seasons

A group of students were asked, “What is your favorite season?” Their responses are shown in the bar graph.



Answer the questions using the graph.

1. How many students voted for summer?

2. What is the total number of students who voted for fall or spring?

3. Which two seasons have a total of 10 votes?

4. How many students voted?