

Lesson 9 Practice Problems

1. *Technology required.* The data represent the average customer ratings for several items sold online.

0.5	1	1.2	1.3	2.1	2.1	2.1	2.3
2.5	2.6	3.5	3.6	3.7	4	4.1	4.1
4.2	4.2	4.5	4.7	4.8			

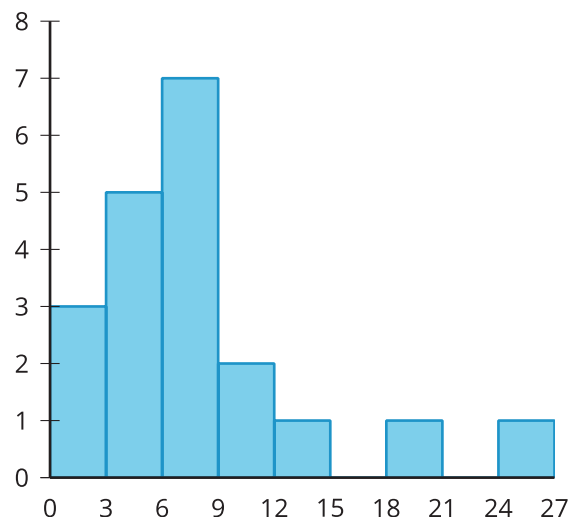
- Use technology to create a histogram for the data with intervals 0–1, 1–2, and so on.
- Describe the shape of the distribution.
- Which interval has the highest frequency?

2. *Technology required.* The data represent the amount of corn, in bushels per acre, harvested from different locations.

133, 133, 134, 134, 134, 135, 135, 135, 135, 135, 135, 136, 136, 136, 137, 137, 138, 138, 139, 140

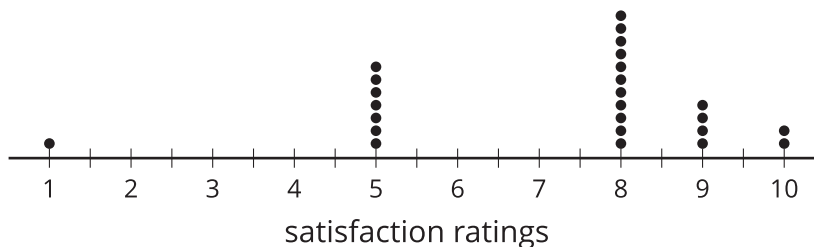
- Use technology to create a dot plot and a box plot.
- What is the shape of the distribution?
- Compare the information displayed by the dot plot and box plot.

3.
 - a. Describe the shape of the distribution.
 - b. How many values are represented by the histogram?
 - c. Write a statistical question that could have produced the data set summarized in the histogram.



(From Unit 1, Lesson 4.)

4. The dot plot represents the distribution of satisfaction ratings for a landscaping company on a scale of 1 to 10. Twenty-five customers were surveyed.



On average, what was the satisfaction rating of the landscaping company?

(From Unit 1, Lesson 3.)